

# Walk-in Stability Chamber

For Stability Study as per ICH Q1A(R2), ANVISA, ASEAN, WHO, MCA, USFDA etc...



**Technical Specification :** Temperature Range : 20°C - 60 °C  
 Humidity Range : 40 %RH - 95 %RH  
 Accuracy :  $\pm 0.2^{\circ}\text{C}$  /  $\pm 2.0\%$  RH  
 Uniformity :  $\pm 2.0^{\circ}\text{C}$  /  $\pm 3.0\%$  RH  
 Suitable for : 25°C & 60 %RH, 30°C & 65 %RH, 40°C & 75 %RH, 30°C & 75 %RH Specially designed chambers for Low Humidity conditions such as 25°C & 40 %RH, 40°C & 25 %RH , 30°C & 35 %RH

Models	Capacity in Liters	Internal Dimension In MM			External Dimension In MM			Rack Qty.	No. of Trays
		Width	Depth	Height	Width	Depth	Height		
KGWS - 2400	2400 Ltr.	1600	750	2000	1720	870	2120	2	10
KGWS - 3K	3008 Ltr.	1600	940	2000	1720	1060	2120	2	10
KGWS - 4K	4000 Ltr.	1600	1250	2000	1720	1370	2120	2	16
KGWS - 5K	5120 Ltr.	1600	1600	2000	1720	1720	2120	2	16
KGWS - 6K	6120 Ltr.	1700	1800	2000	1820	1920	2120	2	16
KGWS - 7K	7000 Ltr.	1750	2000	2000	1870	2120	2120	2	16
KGWS - 8K	8000 Ltr.	1850	2080	2080	1970	2200	2200	2	16
KGWS - 10K	10000 Ltr.	1850	2600	2080	1970	2720	2200	2	24
KGWS - 12K	12000 Ltr.	1850	2730	2380	1970	2850	2500	2	24
KGWS - 16K	16000 Ltr.	2250	3000	2380	2370	3120	2500	2	24
KGWS - 18K	18000 Ltr.	2250	3380	2380	2370	3500	2500	2	32
KGWS - 20K	20000 Ltr.	2250	3740	2380	2370	3860	2500	2	32
KGWS - 24K	24000 Ltr.	2480	4100	2380	2600	4220	2500	2	32

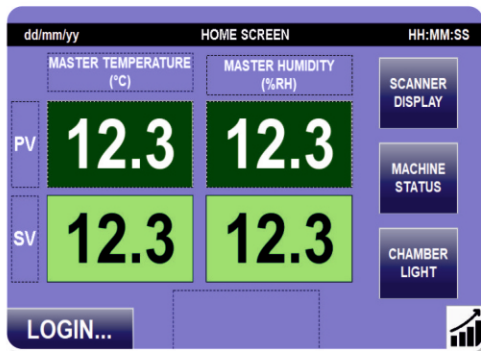
**NOTE :** Extra Trays will provide on request as per capacity of chamber Other Sizes and Customize models are available on request.



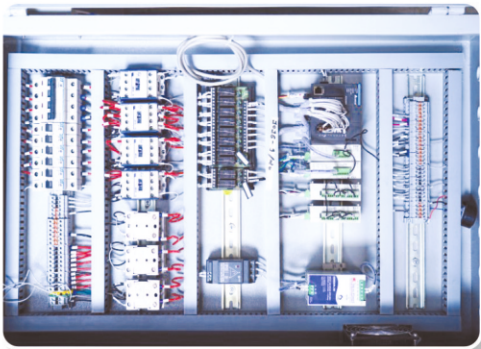




Inner View



Display (HMI)



Control Panel



Refrigeration Unit

### Features :

Low energy and Low water Consumption Equipments.

### Construction :

- Pre-fabricated modular panel type construction with PUF insulation to be assembled on site with floor panels having extra reinforcement to sustain the movement and sample load inside the chamber.
- The inner working chamber is water & vapour tight high-grade stainless steel.
- Chambers are provided with effective air circulation system, heating & cooling systems and humidity generator system.
- Multi pane vacuum sealed observation glass window to view the samples without disturbing the test condition & human safety.
- Heavy duty solid stainless steel duly electro polished wire mesh/perforated type trays are provided which are easy to clean, time & efforts saving, also adjustable for convenience, along with detachable racks with adjustable angles.

### Control Systems :

- 7" HMI with TFT LCD Colour touch screen with password protection for all parameter actual status monitoring of utilities like Sensor, Heating & Cooling System, Humidity System.
- Rotronic make 4-20mA sensors for better accuracy.
- PLC with auto tuning facility for accurate control of temperature and humidity conditions.
- Data Storage facility in HMI and PLC Both PLC'S Stored data transfer in software via Ethernet and HMI'S Stored data can be view obtain in PDF form through USB Drive.

### Alarm & Safety :

- Temperature deviation & RH deviation Alarm
- Power Failure Alarm
- Continues open door alarm
- Temperature & RH Safety Cutoff
- Low water level Cutoff
- Auto change over Facility for RH Generator & Cooling System

### Special Features :

- Special door lock is provided which can opened from inside even if locked from outside.
- Password Protected Door Access.
- Person trapped Emergency stop protection.

### Software (21 CFR PART-11 Compliance)

- Log data, Event data, Audit Trail data, E-Records & E-signatures, Graphical analysis & Data acquisition.

### Additional Features :

- Stand by Cooling System
- Stand by Humidity System
- Scanner (8 Temp. + 8 RH for Online Monitoring Purpose)
- Mobile Alert System
- Security Alarm System
- Chiller System
- Eco - Smart System